

## **Wolfberg**

### **Complete guide to SE face and descent gully**

**Access:** From Algeria drive south over Nieuwoudt pass. Permits available at Dwarsrivier during office hours.

#### **SG Satisfaction Guaranteed (18) \*\*\***

The main feature on this route is the big left leaning grey groove to the left of the overhanging bands on the South-West face. Start from the ledges directly below the groove.

Pitch 1: (17) Climb past some suspect blocks into a short corner. Avoid a poised white flake by hand traversing to the left, so gaining a narrow ledge at the foot of the main groove.

Pitch 2: (18) Superb climbing leads up the back of the groove and out to the left around an overhang. Climb up the short corners above to a massive ledge on the right.

Pitch 3: (15) Go horizontally left on a narrow rail to a niche, and then climb directly up on jugs to a belay ledge.

Pitch 4: (¿) An easy chimney gives access to an escape ledge whence scrambling on gargoyles leads to the summit.

FA: D. Davies & Robin Barley 1978

#### **OA Omega (18) \*\*\***

The route traverses in from the right under the BP overhang on the corner between SE and SW faces and takes the obvious line of weakness through the lower band of overhangs onto the grey face. It breaks through a prominent vertical step in the upper band of overhangs and finishes up the orange faces above. Start at the left hand end of the ledge below the SE face.

Pitch 1: (14) Traverse to the left under the BP overhang to a small platform on the corner and continue around the corner on good rails to a narrow ledge.

Pitch 2: (18) Reverse the last part of the traverse, use a concealed flake to pull up into the recess below a ceiling. Traverse to the right across the face and move out under the overhang into a niche.

Pitch 3: (15) Climb up for 3m, traverse back to the left and climb a steep crack with some blocks in it to the level of an overhang. Traverse to the right past the overhang to a ledge below a short grey crack.

Pitch 4: (10) Climb the crack and continue up over large blocks into a cave-like recess. Move to the right and then back to the left onto a nose leading to the broad ledge beneath the second band of overhangs. Walk to the left for 20m to a wall forming a vertical step in the overhangs.

Pitch 5: (17) Use vertical hand jams to move to the left across the wall and up to a small ledge at the base of a vertical crack on the corner above the overhang. Follow the crack up to a stance on some jammed blocks where the crack narrows to a slit 5m below another overhang.

Pitch 6: (10) Traverse to a ledge on the right with a grey face above it, climb the exposed projecting corner and move back to the left to belay directly above the previous stance.

Pitch 7: (15) Layback and jam up a tricky crack, and climb up easily past a pinnacle leaning against the face under an overhang to a large ledge on the left. Scramble 20m or so through a short steep band of rock to an undercut face.

Pitch 8: (¿) Climb the face and scramble to the top.

FA: P. Du Preez & A. Schoon 1978

#### **GB Gallows Bird (23) \*\*\***

This route follows the deep overhanging chimney on the left side of the SW face. It finishes up the nose on the corner of two faces. Start on the left hand end of the higher ledge that the other routes such as Celestial Journey start from.

Pitch 1: (23) From a block a lunge gains access to a square recess above. Climb up and move left into the cubbyhole. Rail left and climb up to a ledge inside the chimney.

Pitch 2: (14) Climb up the chimney and continue up the cracks to a grassy bay below an overhanging crack.

Pitch 3: (17) Climb the crack and right-hand wall up to a chimney. An overhanging lip leads to good ledges.

Pitch 4: (14) Go up left via some grassy cracks and then leftwards around a corner to finish.

FA: D. Davies & R. Barley 1978 FFA: AdK 1983

#### **WG Wolfgang (22) \*\*\*\***

Start 5m right of Gallows Bird.

Pitch 1: (22) Boulder problem start to gain crack. Follow crack past some tricky moves to flakes. Layback up above moving 2m left below a bulge to a V-notch. Continue up and right to a ledge.

Pitch 2: (18) Traverse a few metres right moving up to the next rail. Rail right into a large crack which is followed to a ledge. [Wolf in Sheep's clothing pendulum point]. Follow dassie ledge 5m right.

Pitch 3: (20) Climb the crack in the roof and continue to a big ledge.

Pitch 4: (19) Walk left along ledge. Continue railing at same level to a stance on the nose.

Pitch 5: (18) Climb the rib above the stance to a ledge. Go right and up the next tier to the big ledge.

Pitch 6: (19) Start in the centre of the left-hand reddish wall. Climb to a small ledge and move left to where jug hauling leads to a large ledge.

Pitch 7: (17) Climb the grey arete to the recess above and rail out left under the roof. Continue to the top.

FA: J. Fisher & S. Middlemiss 1988

#### **CJ Celestial Journey (22) \*\*\*\*\***

Route follows direct line up the steep grey walls in the centre of the SE face. Start below the smooth groove 30m left of Afterglow and immediately left of a large detached boulder.

Pitch 1: (22) Climb the crack and peapod groove to a ledge.

Pitch 2: (20) Head up right to a short red groove, turn an overhang, and continue up an awkward grey groove to a massive ledge on the right.

Pitch 3: (22) Above is a grey face. Ascend this to a rail at 10m. Go left past a peg balance up to the left to a narrow ledge. Continue up the crack and face above to another ledge. Belay on the left.

Pitch 4: (18) Traverse around the corner. With peg as protection climb up the face to a good ledge; belay below a steep crack splitting the orange face.

Pitch 5: (18) Climb the crack [an easier alternative (15) exists on the right]

Pitch 6: (22) Climb a layback crack on the left, pass a block to reach the central groove leading up to a hole. Handrail 3m left to a sloping foothold, mantleshef and go hard up to the left on rounded holds to a ledge.

FA: David Davies & Robin Barley 1978

#### **HOG House of Games (22) \*\*\*\***

Start 8m right of CJ at the base of a thin crack just to the left of the arete.

Pitch 1: (17) Climb up to a rail. Move left and up the face to a large ledge.

Pitch 2: (23) Climb the open book. Move right then up and left to a ledge.

Pitch 3: (21) Climb the shallow chimney (shared with CJ). Rail right for 7m to a crack. Climb this and continue up the face to a ledge.

Pitch 4: (22) Start 2m left of Afterglow's 3rd pitch. Climb up grey face and move left and up face - thin. Climb diagonally up to overhang. Traverse 4m left and climb a crack to a roof and rail to left to a stance [shares some of Afterglow's 4th pitch].

Pitch 5: (21) Walk to the left side of the ledge. Climb the steep face directly behind the belay.

Pitch 6: (19) Climb the off-width crack & chimney to a ledge.

Pitch 7: (17) Climb the prominent crack behind the stance to a roof. Stance on the right.

Pitch 8: (21) Climb up to a roof, and rail left and up to a ledge.

FA: D. Shewed, J. Wilse-Samson & A. Forsyth 1988

#### **AG Afterglow (21) \*\*\*\***

Start 15m to the left of the crackline used by Alone in Space at a left facing corner.

Pitch 1: (14) Climb the corner on good holds to a ledge.

Pitch 2: (18) Climb up the grey groove to where it becomes smooth. Move to the left around the corner and up to a roof. Swing up to the right to a rocking block, continue up a crescent crack and hand traverse to the left on good holds to an easy groove. There is a large belay ledge 30m higher.

Pitch 3: (23) This is a variation to the original route which had aid. Climb the wall immediately above. Move up to the second rail, go slightly left and up to another rail. Balance up right and traverse right to join the original route at the belay near the chimney.

Pitch 4: (18) Traverse back to the left below an overhang, and climb up the left-hand side of some yellow flakes to a roof. Hand traverse to the left past a peg and pull up to a good rail. Move more easily to the left to the far end of a ledge.

Pitch 5: (18) Step to the left around the corner and, protected by a peg, climb the unlikely looking grey wall on small holds. [ Shared with Celestial Journey ]. Continue up over some ledges to belay below a rounded crack.

Pitch 6: (17) Climb the crack until it becomes awkward and then rail to the left across a wall to a big ledge.

Pitch 7: (17) From the top of the block on a higher ledge, pull up and climb straight up a grey wall to reach an orange recess. Handrail out to the right, Stand up and continue to the right to the cliff top.

FA: Richard Smithers, Mike Hafner & Robin Barley 1979

FFA: Pitch 3 -Mike Roberts & Chris "King-Ding" Leslie-Smith 1984

#### **AIS Alone in Space (22) \*\*\***

The route follows the curved yellow crack system on the right-hand side of the SE face, and finishes up the magnificently exposed orange walls above. Start in the vertical crack line directly below the huge detached yellow pedestal of the bottom of the curved crack.

Pitch 1: (15) Climb a hand jam crack, then up more easily past the yellow pedestal and so to belay atop the guillotine, a precariously poised flake wedged in the main crack below a triangular overhang.

Pitch 2: (22) Climb into the bowels of the crack to find a good chockstone runner, then descend and jam/undercling across the ceiling crack to reach better layback holds and an awkward rest spot. Continue with difficulty to belay in the chimney above.

Pitch 3: (15) Step to the left and climb up to and through a smooth chimney to a sandy ledge.

Pitch 4: (18) Enter the attic above. Squeeze through the window and follow in the same line passing a short but ferocious Jam crack.

Pitch 5: (21) Walk 10m to the left to below a steep orange wall. Partial protection for this pitch can be arranged up on the left arete. Mantleshef, then climb up slightly to the right past a ledge to belay in a shallow alcove.

Pitch 6: (18) Continue up to the right on good rails, finally pulling strenuously over a very exposed overhang to another alcove.

Pitch 7: (12) Go to the right and then up jugs to finish.

FA: Dave Davies & Robin Barley 1978 FFA: Pitch 2: Mike Roberts

#### **WE Whinge (18,A1) \*\*\***

The route climbs the obvious square arete and red roofs to the right of Alone in Space. Start at the base of the undercut base of the arete.

Pitch 1: (18) Start slightly to the right and rail to the left just above the triangular roof to the arete, which is climbed to a stance on the left.

Pitch 2: ( ) Climb stepped flakes to a ledge.

Pitch 3: (18,A1) Climb free to a small overhang a few metres above the ledge, and one metre to the right of the arete. Use 3 or 4 nuts to aid left and up on to the arete, which is followed (free) to the next ledge.

Pitch 4: (20) Traverse out to the left over space. Climb up to the roof and rail leftwards out of sight. Climb past red rails to a stance.

Pitch 5: (20) Climb up until able to traverse left beneath the overhang. Continue over easier rock to the summit.

FA: C. Lomax & K. Smith 1983

#### **GBS Good-Bye Blue Sky (23) \*\*\*\***

Start from the same ledge as Whinge [a few metres left of Little Red Rooster].

Pitch 1: (23) Climb up leftwards past the triangular roof. Continue up the face above, tending slightly left until an easing. Tend back rightwards up to the stepped flakes (on Whinge) which are climbed to a narrow ledge.

Pitch 2: (23) Walk left to a seam which is climbed past a bolt to a rail. Move left and then up a break to a mega ledge.

FA: Mike Hislop

Descent: Walk right and scramble down to rap. Tree

### **LRR Little Red Rooster (14) \*\***

The route follows a prominent curving ramp which runs up on the right of the projecting corner at the right-hand extremity of the SE face.

Pitch 1: (12) Climb a scruffy chimney/crack which breaks through the first grey band of rock. Scramble up to the left to a large ledge immediately below the start of the ramp.

Pitch 2: (14) Climb the recess to a ledge below an overhang.

Pitch 3: (14) Continue up to the overhang and then exit to the right onto the ramp which provides easier climbing to a large ledge.

Pitch 4: (12) Climb the gargoyles through the face above to the top.

FA: Mike Roberts & Richard Smithers 1978

### **EC Energy Crisis (20) \*\*\*\***

The route climbs the buttress between the western-most crack and the gaper crack.

Pitch 1: (20) Ascend the layback crack to a ledge.

Pitch 2: (15) Do a few more moves up the corner, rail right and then up face and crack to a stance out of sight beneath a large overhang.

Pitch 3: (17) Climb the crack in the corner, rail out left and around the corner to an easy traverse line. Traverse left with an awkward move at the end to gain a ledge.

Pitch 4: (12) Continue up the juggy wall to a ledge, pull through the overhang on jugs and up to another ledge.

Pitch 5: (16) Step off beacon, climb a move or two up the crack before railing right & up the face to the summit.

FA: Robin Barley & Richard Smithers (with Mick Hafner on pitches 5 & 6) 1979

### **LW Lone Wolf (17) \*\*\***

Takes the curving crack system around the corner from EC.

### **LOTR Lord of the Rings (22) \*\*\*\***

The route takes the face right of LW. Start at the undercut base.

Pitch 1: (22) Climb the seam, past the peg, to a curving crack which leads one to a belay on a lumpy pillar.

Pitch 2: (22) Climb up to a rounded rail. Rail left around the corner after a few metres climb up to a narrow ledge.

Pitch 3: (21) Traverse delicately left, then up a corner, and then climb out onto the arete. Climb this moving right at the lip of the roof and up a crack to a party ledge.

FA: JC (Jeremy Colenso) & P. Schlotveldt 1987

### **SE Silhouette (22) \*\*\***

Start more or less in the same place as LOTR.

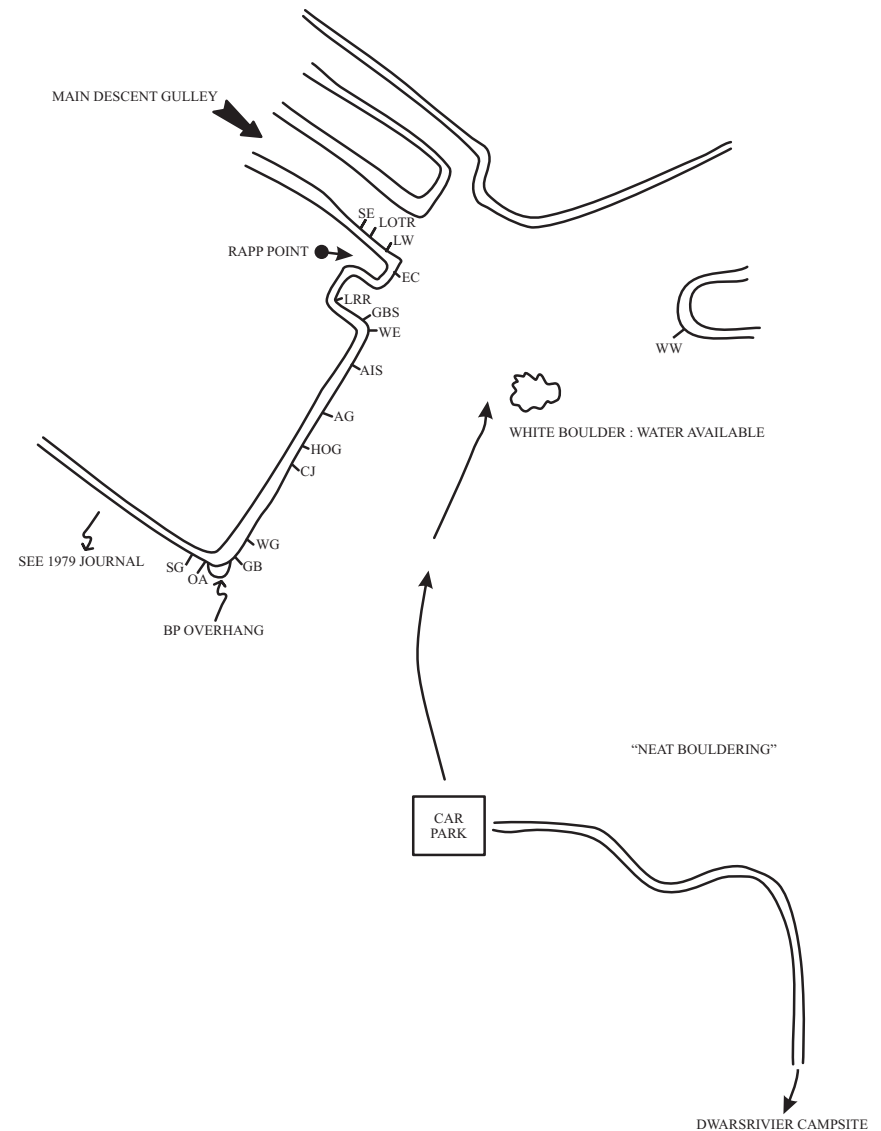
Pitch 1: (17) Climb up and diagonally right to belay on the right-hand side of the obvious, lumpy, leaning pillar.

Pitch 2: (22) [Shared with LOTR] Climb up to the rounded rail which is followed leftwards around the corner. After a few desperate metres, make hard moves up to reach a small stance.

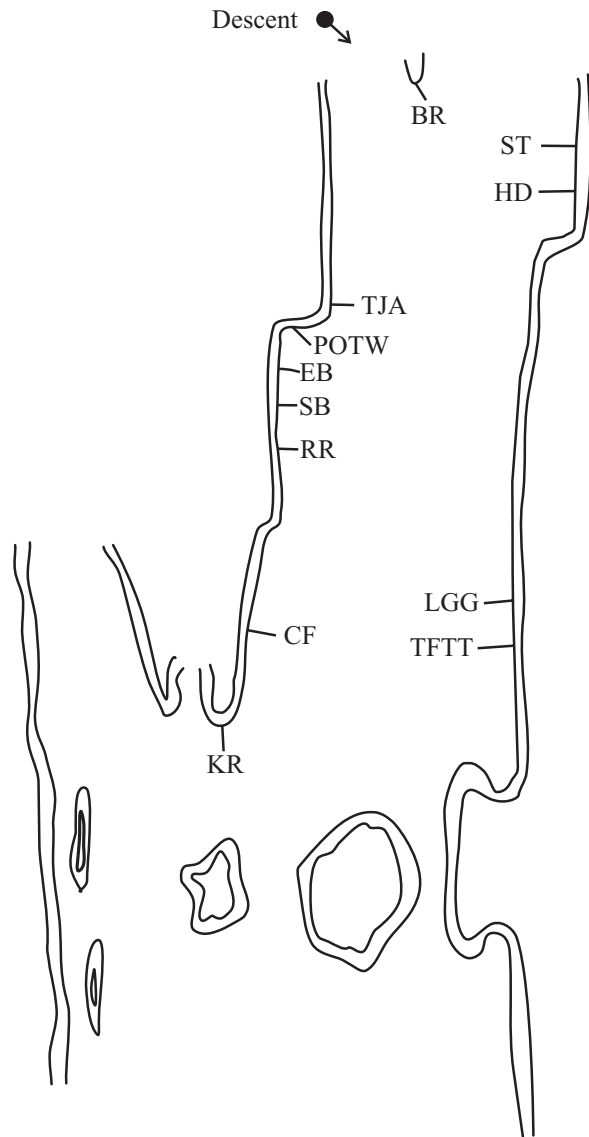
Pitch 3: (20) Climb the steep open book on the right, traverse to the right, and move up to a ledge.

Pitch 4: (14) Climb up rightwards and continue to the top over mammoth jugholds.

FA: C. Lomax & K. Smith 1983



# THE DESCENT GULLY



## The Descent Gully

### **KR Knobless Robot (18) \*\*\*\***

Pitch 1: (17) Climb the right hand leg, up the crack, then out to the right to belay on corner.

Pitch 2: (18) Traverse left & then up immaculate face to the top.

FA: G. Robbins & D. Bottomley 1983

### **CF Creature Feature (22) \*\*\***

Seam & Roof around the corner from KR.

FA: J. Wilse-Samson & J. Berrisford 1988

### **RR Red Rain (25) \*\*\*\*\* FA: J. Fisher 1988**

### **SB Sanbanessa (25) \*\*\*\*\* FA: J. Fisher 1988**

### **EB Excellent Birds (22/23) R \*\*\*\***

Start up POTW traverse in to base of thin crack. Straight up.

FA: J. Fisher 1988

### **POTW Pigs on the Wing (18) \*\***

The Corner.

FA: M. Williams, B. Ferreira, S. Middlemiss & J. Fisher 1988

### **TJA The Jeremies Arete (22) \*\*\***

Start around the corner from POTW at the base of undercut face. Boulder onto face & climb this keeping slightly right of the arete.

FA: JC & JWS 1988

### **ST Swordfish Trombone (20) \*\*\***

FA: M. Schaff & M. Williams 1988

### **HD Humpty-Dumpty (19) \*\*\***

FA: G. Holwill, S. Larsen, H. Loots & Many others 1988

### **LGG La Grande Gul (17) \*\*\***

FA: J. Fisher & Chris Rolf 1985

### **TFFT Tea for the Tillerman (24) \*\*\*\*\***

Climb grey face (bolt) and straight up wall above through orange band of rock.

FA: J. Colenso & J. Fisher 1988

## Wedwoe Buttress

### **WW Wedwoe (22) \*\*\***

Climbs the arete on the right-hand side, as one walks up..

FA: G. Robbins & D. Bottomley 1983